



The Vicarage at Grantchester (ArtNet)



Autumn storm, Drummer Street Cambridge bus station 1942-44



Lammas land or Coe Fen 1946(cwantiques.co.uk)



Coe Fen (looking towards the rear of Peterhouse and the Fitzwilliam museum) (C Lees)



Houghton Mill (J Lindgren)



Brookside, Cambridge (J Lindgren)



A picnic at Fen Ditton 1902 (J Lindgren)

*From handwriting of
The painter, Miss Mary Greene*

DRAFT

In the summer of 1902 Mrs William Greene of
Harston ~~and~~ my mother arranged to have a picnic in
the meadow at Fen Ditton after the races were over.
She decided to sit in the boat until the tea was
ready. Who kept her company I do not remember.
Oscar and Helen worked at the stove to boil
the kettle. Florence and some say Helen Less
unpacked the hamper. Marion with Raymond - one of
the clubbers of Harston later in life - on her lap
with Molly and Herbert by her side. In the distance
Elvie Courtney listens to the conversation of an
undergraduate, what likely Mr Watson whom she after-
wards married. I, Mary, does not appear. She was
too busy making her first pencil sketch of the scene.



Coe Fen (C Lees)



A yard near St John's Court (C Lees)



A yard off Trumpington Street (C Lees)



Caxton printworks off Sydney Street (C Lees)



Old Castle Yard, 1912



Albany Café (C Lees)

Attached to Albany Café painting

"I usually had my lunch at the Albany Café, a little café with an atmosphere of its own. It had for some reason become the lunch place of many well-known Cambridge men. Whenever I sold a picture, I ordered sardines on toast, and apricots and cream. The meaning of the way I was regaling myself became known and I had congratulations from the habitués when they saw what was on my plate."



Market Square, Cambridge (D Deacon)



Brown's livery stable yard, Cambridge (Museum of Cambridge)



Sayles Yard, St Tibb's Row, Cambridge (Museum of Cambridge)

Nine Pin Yard, Cambridge 1909 (Museum of Cambridge)



Emmanuel Street, Cambridge (Museum of Cambridge)





Red Lion Yard, Cambridge 1947 (Museum of Cambridge)



St Andrew's Hill, Cambridge 1947 (Museum of Cambridge)



Wray's Court, Cambridge 1918



Falcon Court, Cambridge (Museum of Cambridge)



Front of True Blue Inn, Sydney Street, Cambridge (Museum of Cambridge)



Free School Lane, Cambridge 1949 (Museum of Cambridge)



White Horse Inn, Cambridge 1909



North side of St Edward's Passage (Museum of Cambridge)



Quince's Court, Hobson's Yard (Museum of Cambridge)

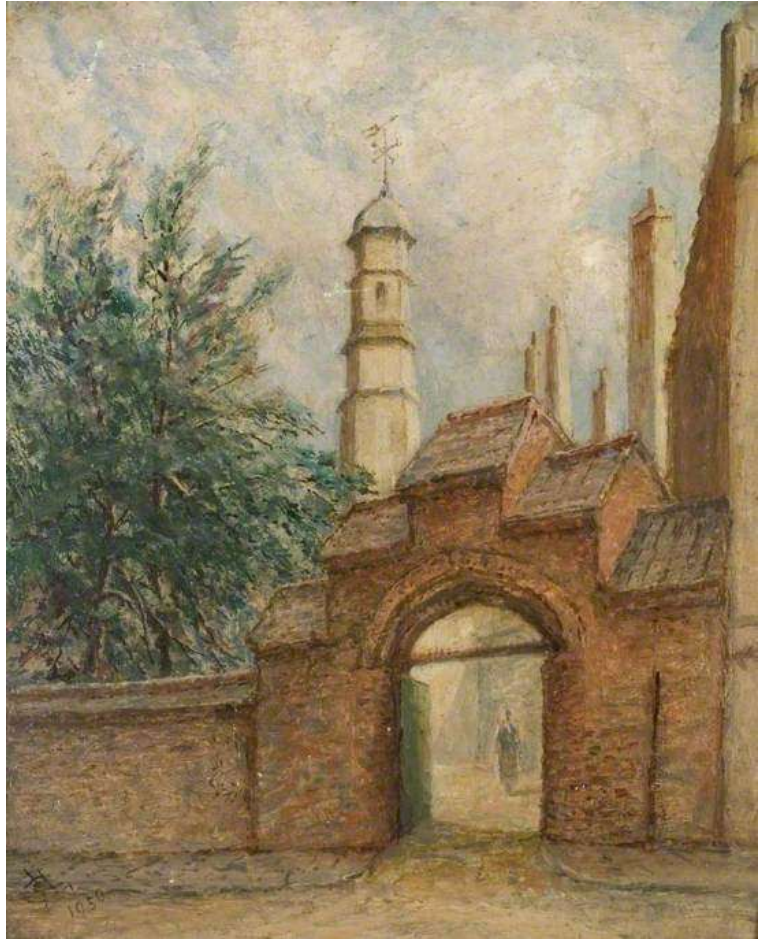


Unknown (Museum of Cambridge)



Yard off Granta Place (Museum of Cambridge)

Gateway to Christ's College (Museum of Cambridge)



Possibly Hemingford Grey (F Clarke)

Weaving Room (MutualArt)

